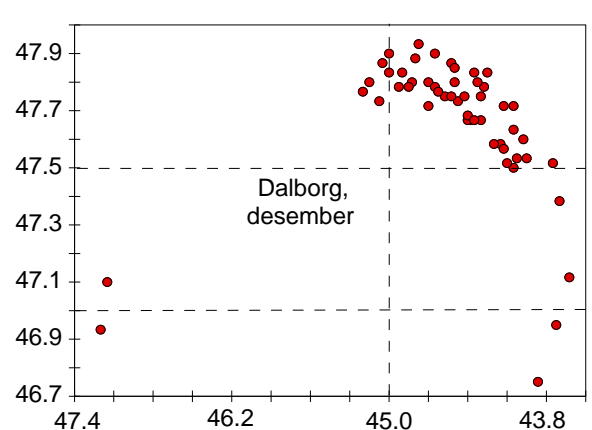
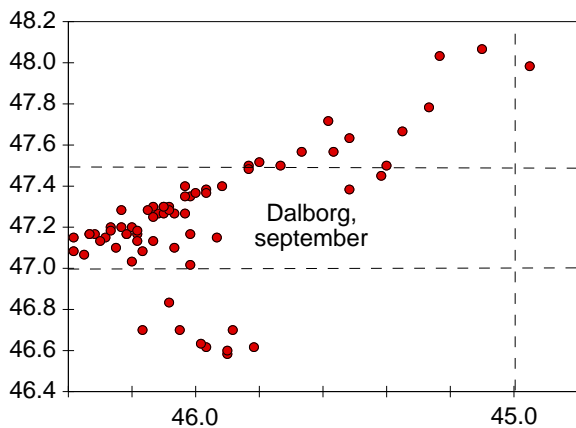
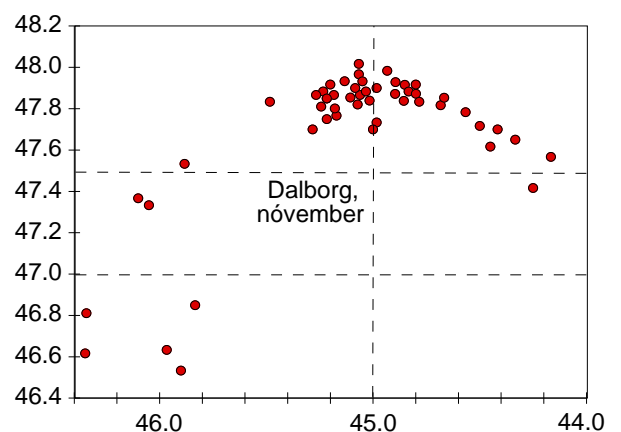
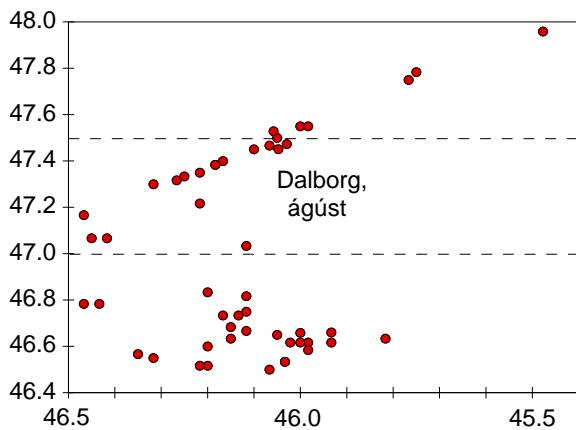
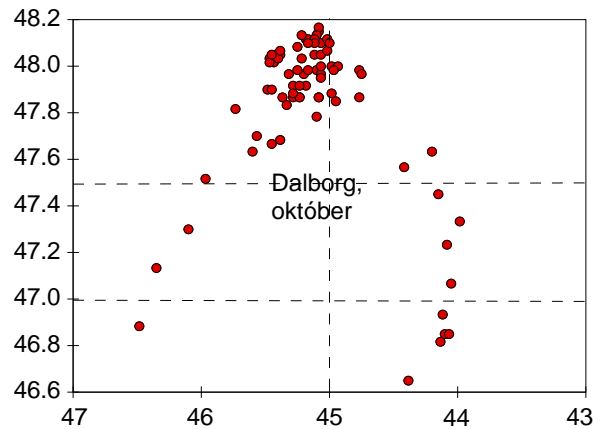
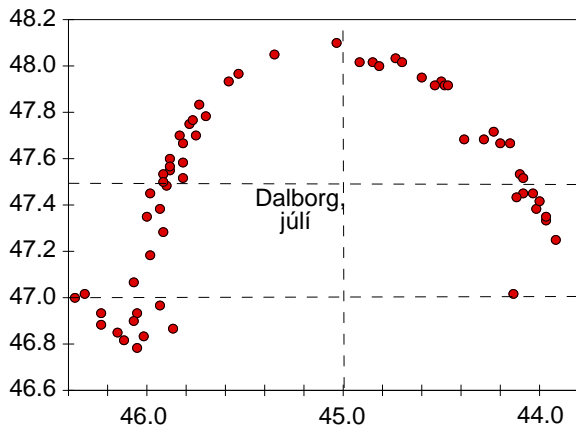


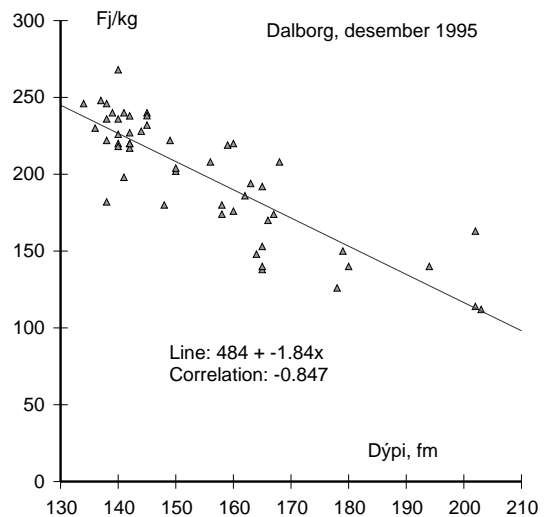
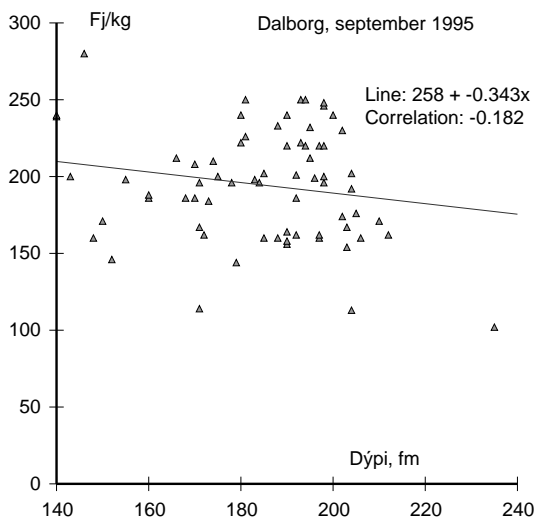
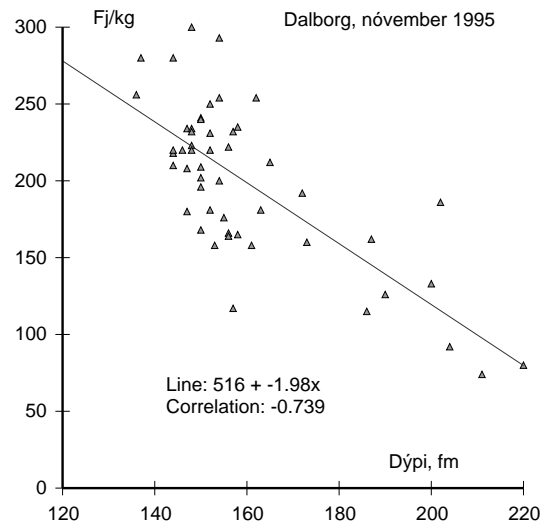
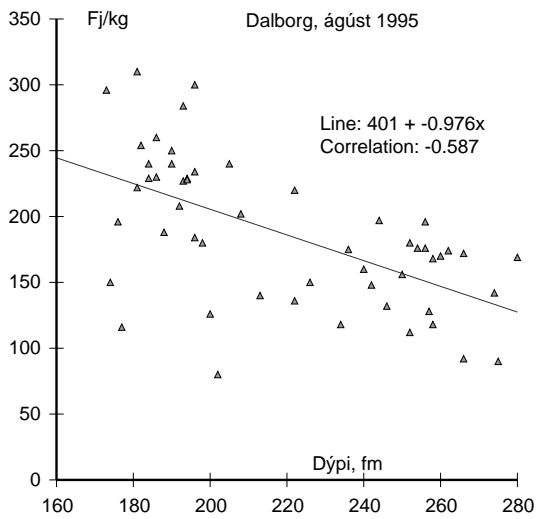
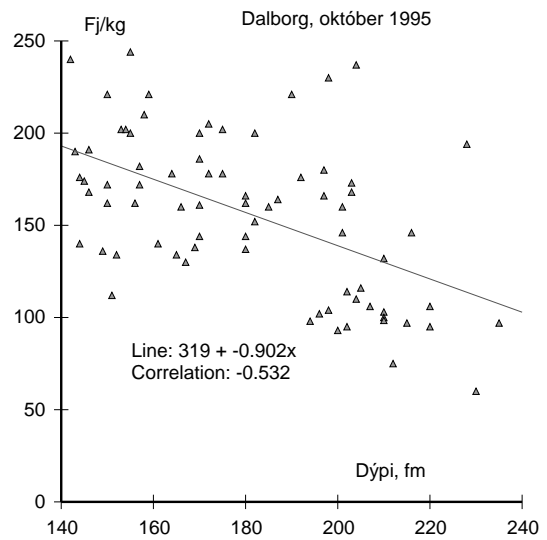
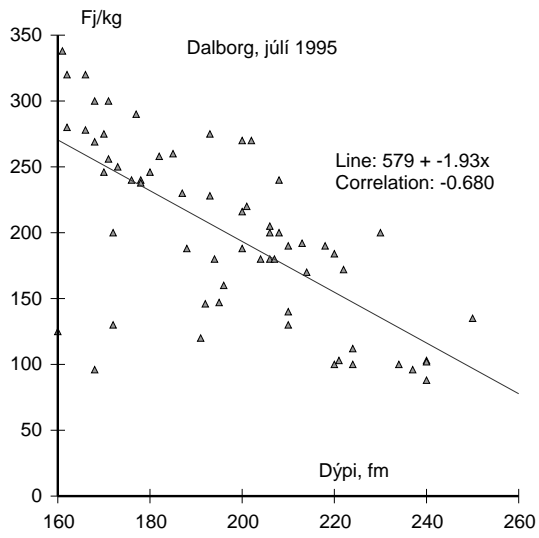
Viðauki 1.

Myndræn gögn úr veiðidagbók

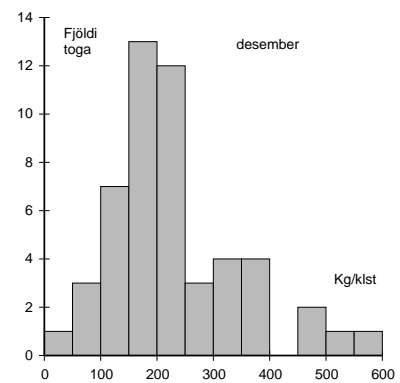
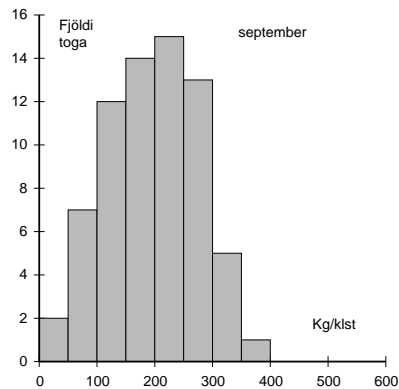
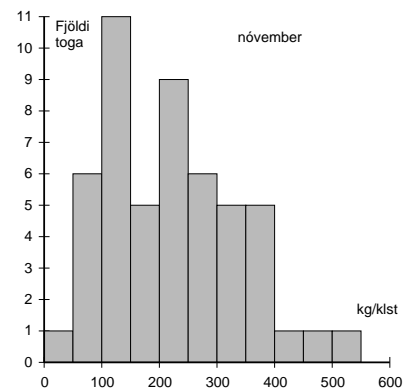
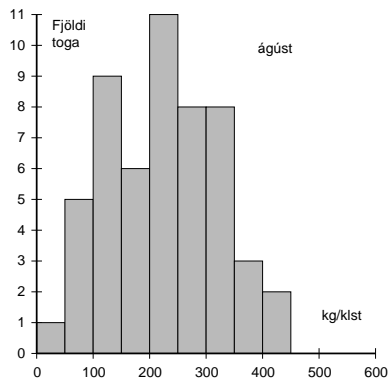
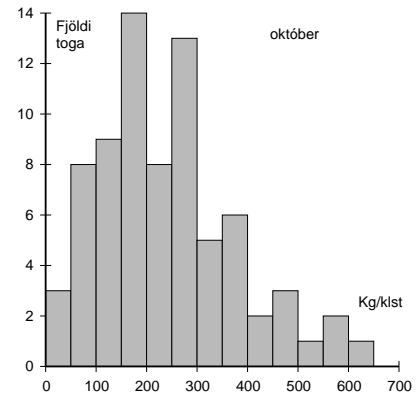
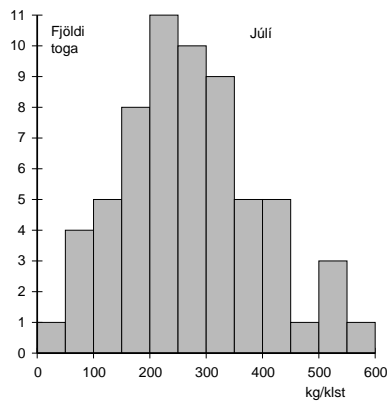
A) Togstöðvar hvers mánaðar. Ath. að lengdar- og breiddargráður eru ekki alls staðar í sama skala.



B. Talning (fjöldi/kg) rækju sem fall af dýpi mánuðina júlí-desember 1995.



C. Afli á sóknareiningu hjá Dalborgu mánuðina júlí-desember 1995



D. Afli á sóknareiningu hjá Dalborgu miðað við tíma sólarhrings, tímabilið júlí-desember 1995. Miðdegishal er frá um kl. 13-20, næturhal frá um kl. 20-05, morgunhal frá um kl. 05-13.

